

Architectural elevation drawing of the 10th floor of the building. The drawing shows the facade with windows, balconies, and structural elements. The vertical scale on the left indicates the following heights from the 1st floor:

- 10'-0" TO ROOF
- 10'-0" TO PARAPET
- 10'-0" TO ROOF SLAB
- 10'-0" 2ND FLOOR
- 10'-0" 1ST FLOOR
- 10'-0" 2ND FLOOR
- 10'-0" 3RD FLOOR
- 10'-0" 1ST FLOOR

The horizontal scale at the top indicates the following positions:

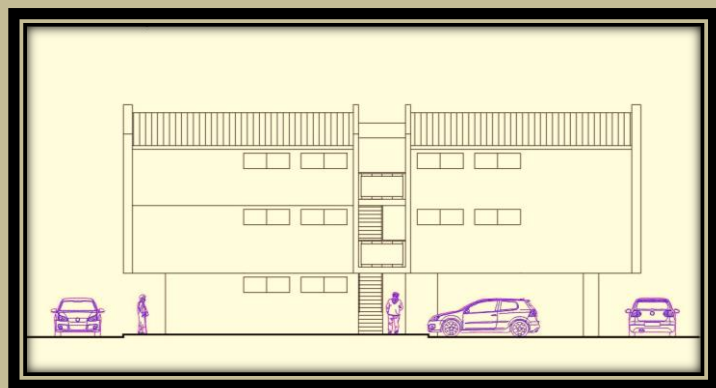
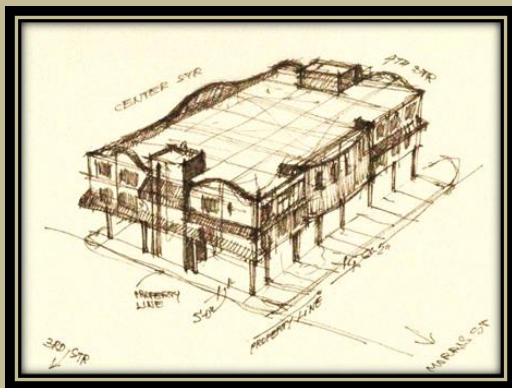
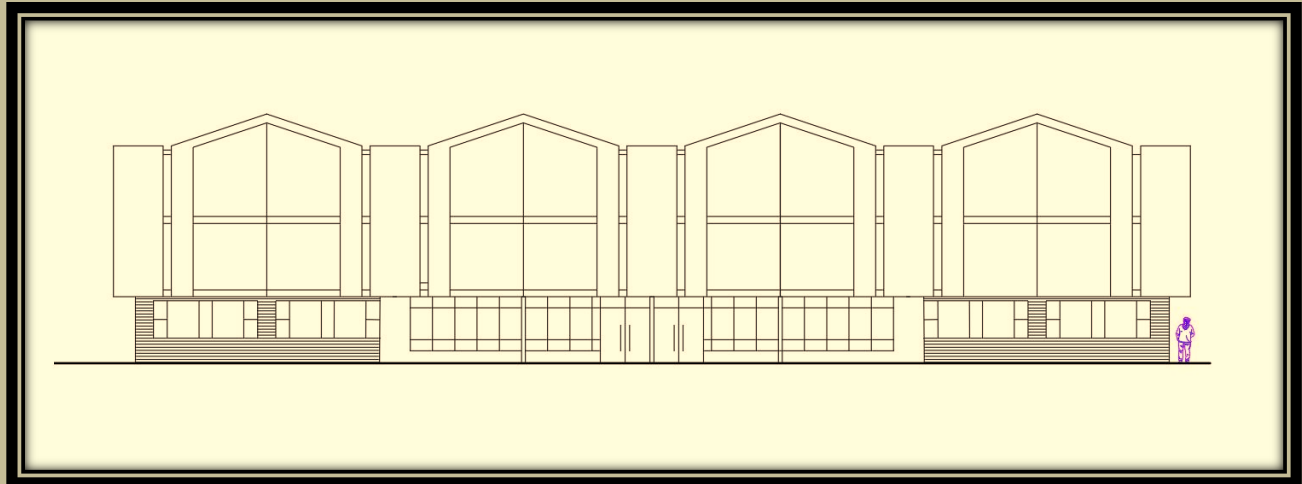
- A
- B
- D
- G
- H

This architectural section drawing illustrates a two-story residential structure. The house features a prominent sloped roof with a wooden finish. A balcony with a dark metal railing is located on the upper level, accessible via a staircase. The exterior walls are clad in vertical wooden siding. To the left of the house, a group of stylized human figures is shown for scale. To the right, a large, leafy tree is depicted. The drawing includes several elevation markers on the right side: '29'7" T.O. ROOF', '18'6" T.O. ROOF', '8'0" 2ND FL.', and '0'0" T.O. GARAGE & G.L.'. The entire drawing is enclosed within a double-line border.

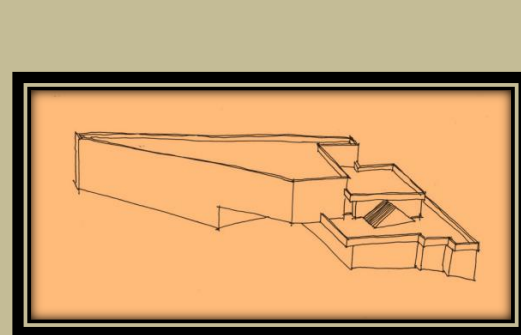
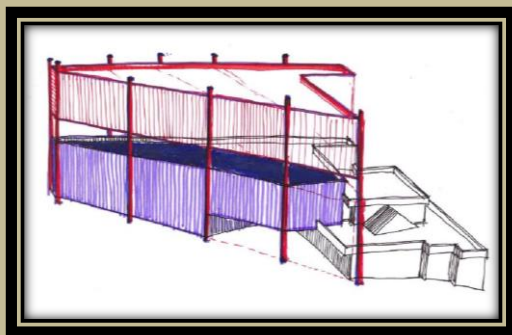
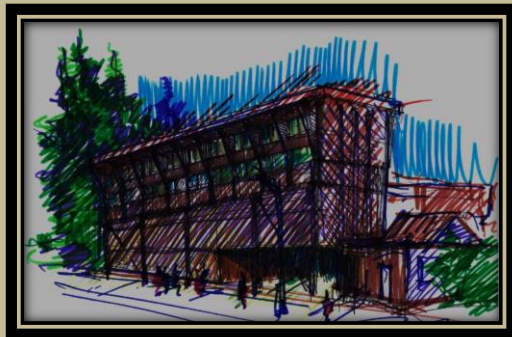
An architectural elevation drawing of a modern building. The structure features a central entrance with a large glass door and windows, flanked by dark, angular roof sections. The building has a mix of dark brown and light beige tones. To the right of the building is a stylized tree. The drawing is enclosed in a double-line border.

A detailed floor plan of a 1000 sq. ft. house. The overall dimensions are 34' wide by 32' deep. The layout includes a front porch (12' x 8'), a living room (12' x 12') with a fireplace, a dining room (12' x 12') with a table and chairs, a kitchen (12' x 12') with a sink, stove, and refrigerator, a breakfast room (12' x 12') with a table and chairs, a bathroom (5' x 7'), a bedroom (12' x 12'), a second bedroom (12' x 12'), a third bedroom (12' x 12'), a fourth bedroom (12' x 12'), a fifth bedroom (12' x 12'), a sixth bedroom (12' x 12'), a seventh bedroom (12' x 12'), an eighth bedroom (12' x 12'), a ninth bedroom (12' x 12'), a tenth bedroom (12' x 12'), an eleventh bedroom (12' x 12'), a twelfth bedroom (12' x 12'), a thirteenth bedroom (12' x 12'), a fourteenth bedroom (12' x 12'), a fifteenth bedroom (12' x 12'), a sixteenth bedroom (12' x 12'), a seventeenth bedroom (12' x 12'), an eighteenth bedroom (12' x 12'), a nineteenth bedroom (12' x 12'), a twentieth bedroom (12' x 12'), a twenty-first bedroom (12' x 12'), a twenty-second bedroom (12' x 12'), a twenty-third bedroom (12' x 12'), a twenty-fourth bedroom (12' x 12'), a twenty-fifth bedroom (12' x 12'), a twenty-sixth bedroom (12' x 12'), a twenty-seventh bedroom (12' x 12'), a twenty-eighth bedroom (12' x 12'), a twenty-ninth bedroom (12' x 12'), a thirtieth bedroom (12' x 12'), a thirty-first bedroom (12' x 12'), a thirty-second bedroom (12' x 12'), a thirty-third bedroom (12' x 12'), a thirty-fourth bedroom (12' x 12'), a thirty-fifth bedroom (12' x 12'), a thirty-sixth bedroom (12' x 12'), a thirty-seventh bedroom (12' x 12'), a thirty-eighth bedroom (12' x 12'), a thirty-ninth bedroom (12' x 12'), a fortieth bedroom (12' x 12'), a forty-first bedroom (12' x 12'), a forty-second bedroom (12' x 12'), a forty-third bedroom (12' x 12'), a forty-fourth bedroom (12' x 12'), a forty-fifth bedroom (12' x 12'), a forty-sixth bedroom (12' x 12'), a forty-seventh bedroom (12' x 12'), a forty-eighth bedroom (12' x 12'), a forty-ninth bedroom (12' x 12'), a fiftieth bedroom (12' x 12'), a fifty-first bedroom (12' x 12'), a fifty-second bedroom (12' x 12'), a fifty-third bedroom (12' x 12'), a fifty-fourth bedroom (12' x 12'), a fifty-fifth bedroom (12' x 12'), a fifty-sixth bedroom (12' x 12'), a fifty-seventh bedroom (12' x 12'), a fifty-eighth bedroom (12' x 12'), a fifty-ninth bedroom (12' x 12'), a sixtieth bedroom (12' x 12'), a sixty-first bedroom (12' x 12'), a sixty-second bedroom (12' x 12'), a sixty-third bedroom (12' x 12'), a sixty-fourth bedroom (12' x 12'), a sixty-fifth bedroom (12' x 12'), a sixty-sixth bedroom (12' x 12'), a sixty-seventh bedroom (12' x 12'), a sixty-eighth bedroom (12' x 12'), a sixty-ninth bedroom (12' x 12'), a seventieth bedroom (12' x 12'), a seventy-first bedroom (12' x 12'), a seventy-second bedroom (12' x 12'), a seventy-third bedroom (12' x 12'), a seventy-fourth bedroom (12' x 12'), a seventy-fifth bedroom (12' x 12'), a seventy-sixth bedroom (12' x 12'), a seventy-seventh bedroom (12' x 12'), a seventy-eighth bedroom (12' x 12'), a seventy-ninth bedroom (12' x 12'), an eightieth bedroom (12' x 12'), an eighty-first bedroom (12' x 12'), an eighty-second bedroom (12' x 12'), an eighty-third bedroom (12' x 12'), an eighty-fourth bedroom (12' x 12'), an eighty-fifth bedroom (12' x 12'), an eighty-sixth bedroom (12' x 12'), an eighty-seventh bedroom (12' x 12'), an eighty-eighth bedroom (12' x 12'), an eighty-ninth bedroom (12' x 12'), a ninetieth bedroom (12' x 12'), a hundredth bedroom (12' x 12').

## GIS RESIDENTIAL CONSTRUCTION



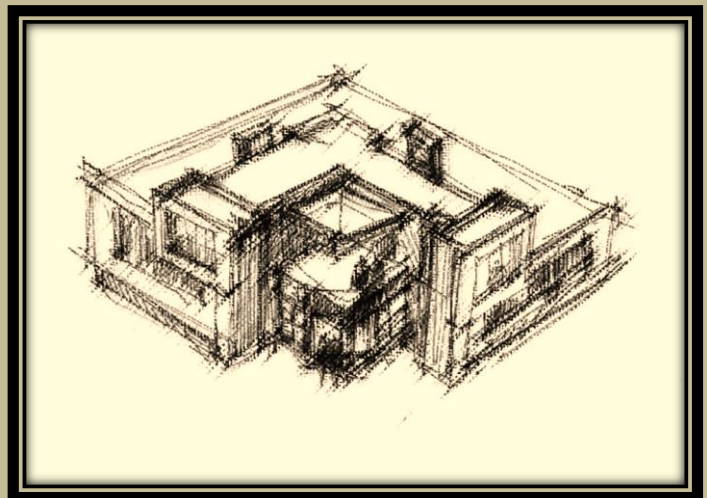
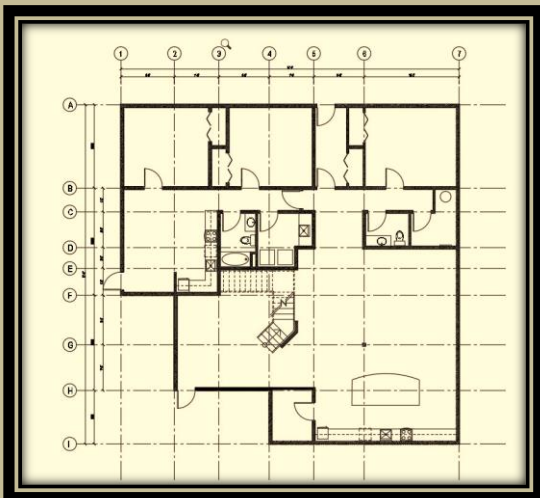
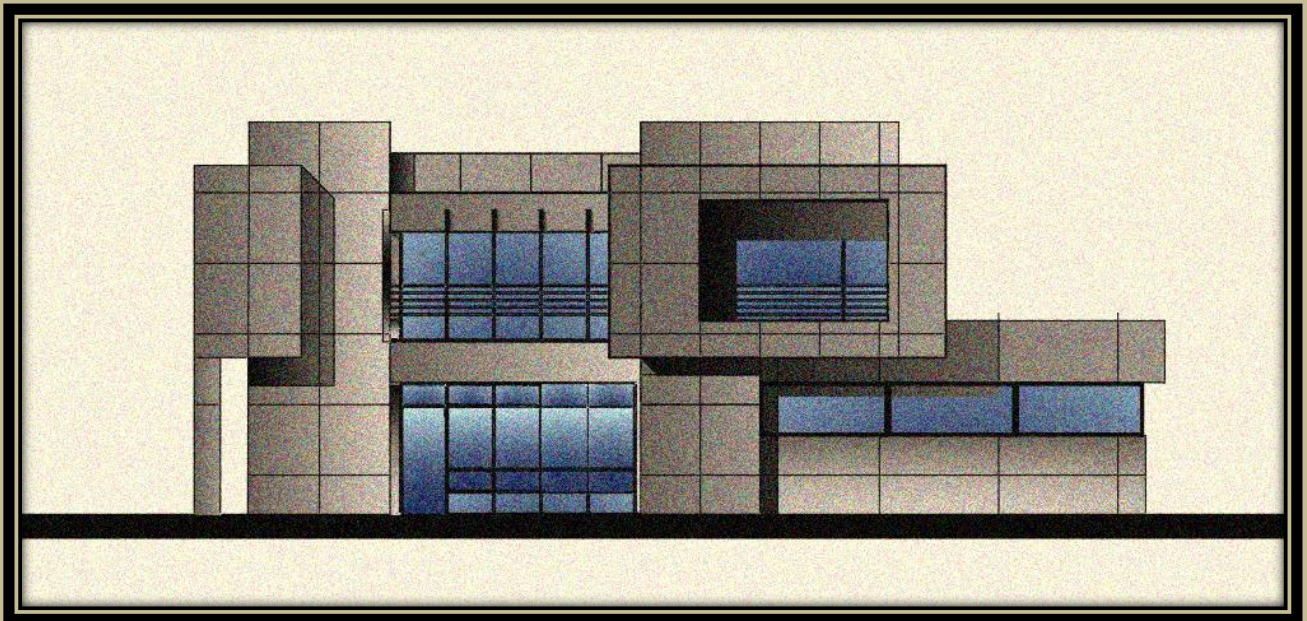
LA CONNER CONDO BUILDING/Concept/Feasibility Study /Modified Old Western ( sketch) and Modern Style



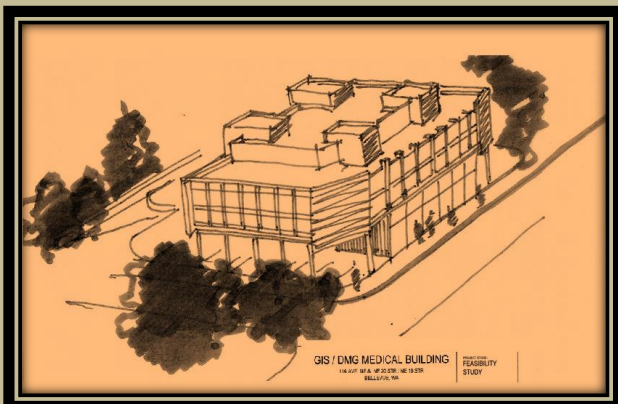
WALLINGFORD INN (Seattle) / Conversion into apartment building /Feasibility study/Concept



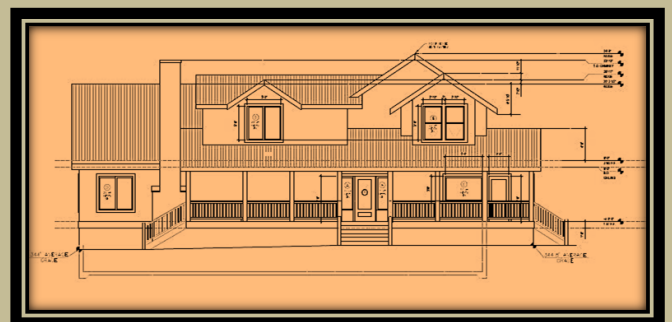
## GIS RESIDENTIAL CONSTRUCTION



**NATHAN M. RESIDENCE (Duvall)**

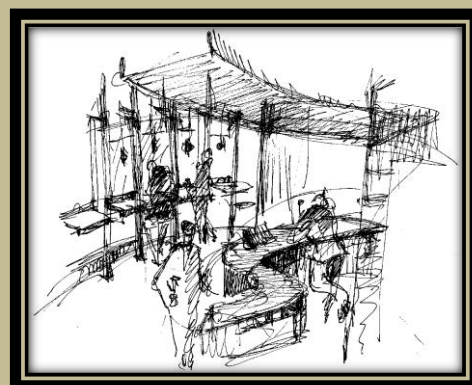
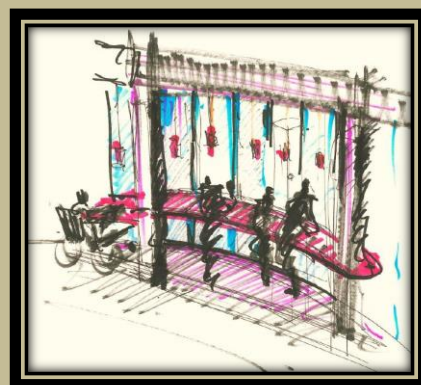
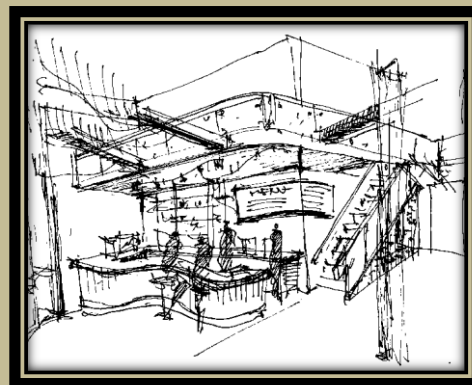
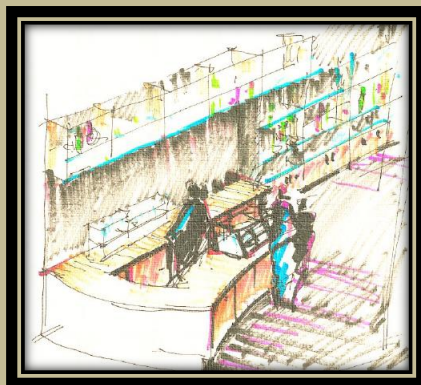
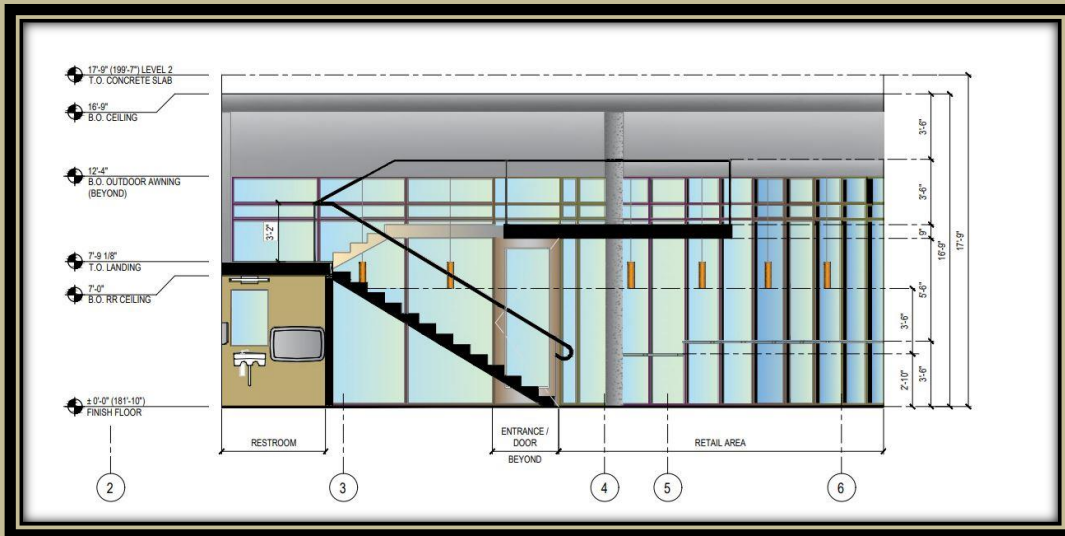
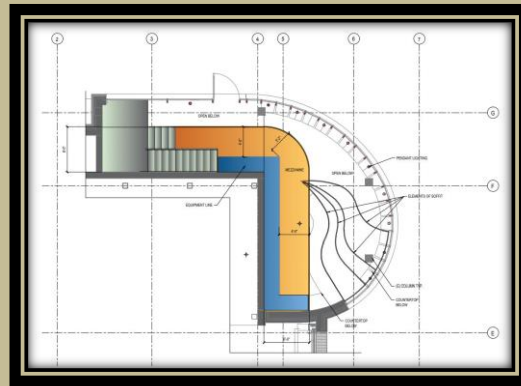
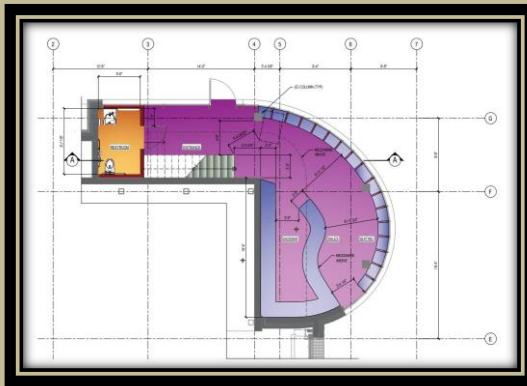


**DMG MEDICAL BUILDING /Concept / (Bellevue)**



**NICK F. RESIDENCE (Sammamish)**

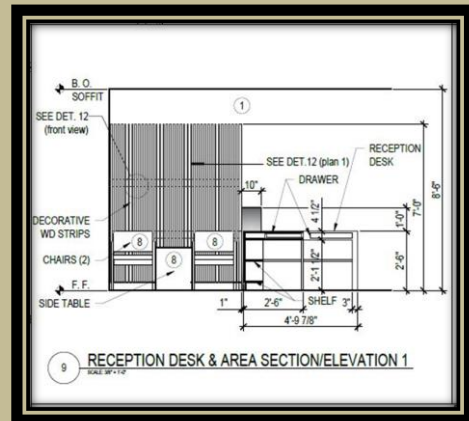
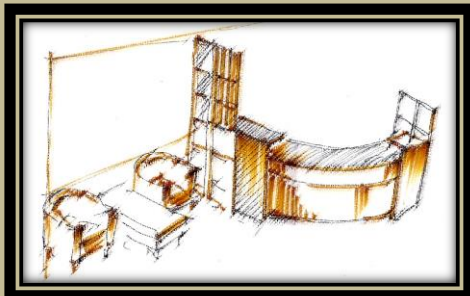
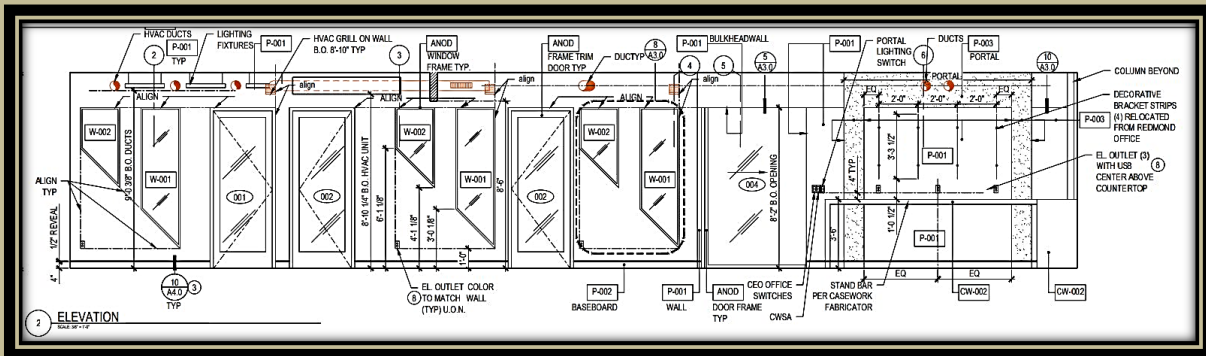
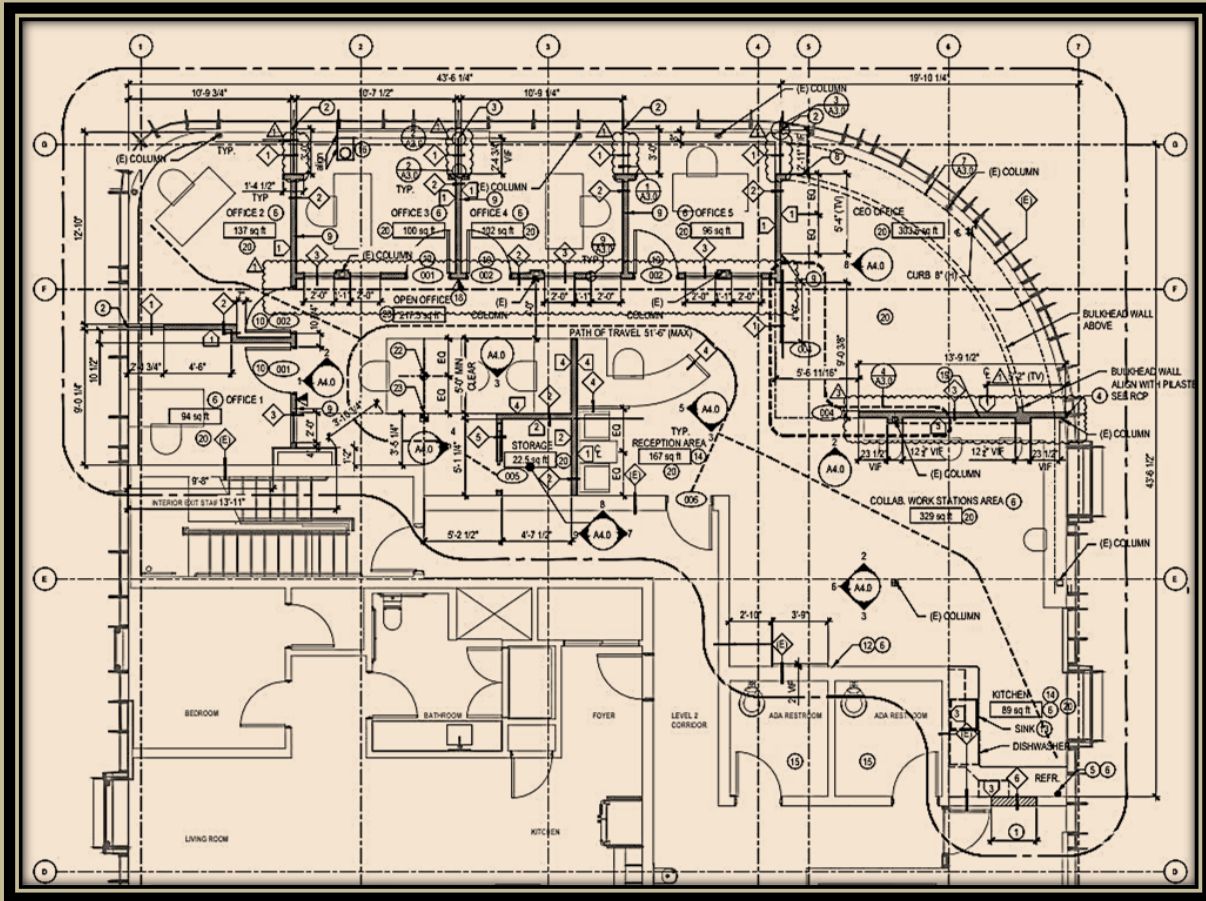
# GIS RESIDENTIAL CONSTRUCTION



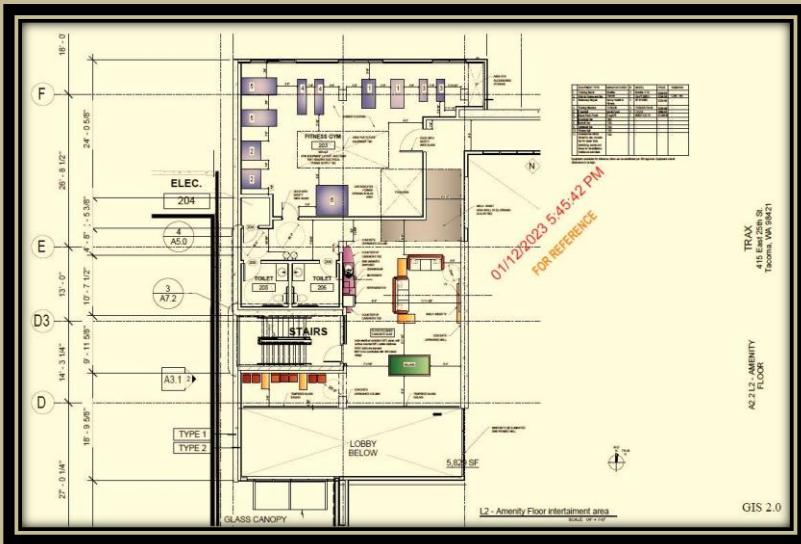
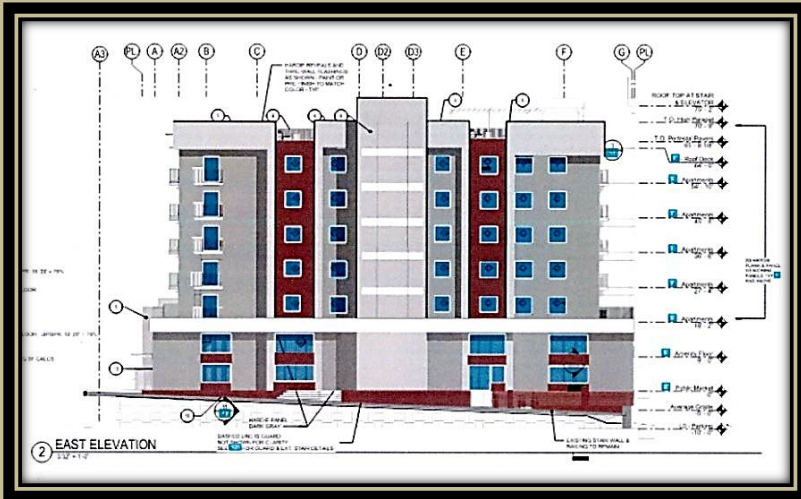
GIS PLAZA – SELKIES BAR INTERIOR / TI (Bellevue)



# GIS RESIDENTIAL CONSTRUCTION



## GIS RESIDENTIAL CONSTRUCTION



**TRAX PLAZA / ELEVATIONS modification /INTERIORS: Fitness Center/Game Room/Lounge Area/ TI (Tacoma)**

## ARTWORK 2020-2023

